



## Vanke – "Kingmetropolis" Sales Office

### 金域华府销售中心

**Location:**  
Shenzhen, China

**Designer:**  
Seiki Mori / studio ARRT

**Photographer:**  
studio ARRT

**Completion date:**  
2008

**项目地点:**  
中国·深圳

**设计单位:**  
盛智臣/ARRT工作室

**摄影:**  
ARRT工作室

**完成时间:**  
2008

The function of the space is for the showroom of residential apartment to promote the residential development. This project consists of several function rooms which are composed of 3 dimensional characteristic objects. Each function room is enveloped by experimental form and material. It generates geomorphologically special atmosphere.

The condition of this function space is set by the architectural spatial character. Since the entire space is designed to be open with the courtyard, the interior design needs to correspond to this condition. Therefore each function room has a characteristic architectural element to generate the natural flow to connect the spatial function from one space to the other. Oak wood as primal material is applied in different forms and functions to unify the spatial atmosphere throughout the entire space.

Main Model Display area – "3D Polygon wooden feature wall" is a main characteristic element to create spatial atmosphere and dynamic movement. And it works as informative wall for the showroom function.

Landscape area – "Connection tunnel" is as a connective spatial element to link up one space to the other. The characteristic form of connection tunnel works as transformation of the perception.

金域华府销售中心位于深圳，分为不同的功能区。其中每个区域在造型及材质运用上都别出心裁，营造了独具特色的空间氛围。独特的建筑结构决定了空间本身的功能——开放式的空间内设有中央庭院。室内装饰设计同样延续这一特色。橡木作为主要材质被大量运用，将空间在视觉及功能上连接起来。

**主展区**  
三维多边形木结构墙体构成主要特色，营造了独特的空间感及动态感。它同时被用作信息墙，突出空间的功能。

**景观区**  
这里如同连通隧道，将不同的空间连接起来。特色十足的造型带来视觉的变化。

**会议区**  
三维多边形木结构天花板成动感十足的照明装饰结构，赋予空间活力。

除简单运用线条及空间造型。设计师试图寻找新的方法以营造全新的感觉——如何利用线条及形状创造美感。比如，墙壁、地板、天花及家具都可用来突出空间，特色十足的线条装饰则将它们统一，精致美感便会应运而生！

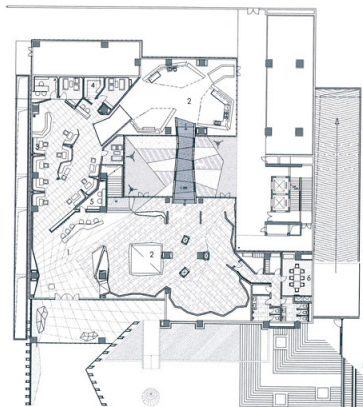


1. Entrance counter
2. Conference room
3. Conference room
4. Conference room
5. Exhibition stand
6. Corridor leads to the conference area

1. 入口吧台
2. 会议室
3. 会议室
4. 会议室
5. 展览台
6. 通向会议区的走廊

Meeting area – "3D Polygon membrane ceiling" is a dynamic lighting feature to create movement in space.

"Complex line & Form" – beyond the above design concept, the designer tried to discover the design methodology to create an experimental space in this project. The designer's intent is to demonstrate how the line and the form can be combined to create richness in space regardless of individual practical elements. Such furniture elements as wall, floor, ceiling can be equally treated as the conceptual key elements to characterise each function room. The characteristic lines on different interior elements harmonise each other to generate complexity and richness in space.



1. Reception desk
2. Model areas
3. Meeting area
4. Manager Office & VIP
5. Staff room
6. Conference room

1. 接待处
2. 模型展示区
3. 研讨区
4. 经理办公室及VIP室
5. 员工办公室
6. 会议室





