

# The Grandville Apartment, Hong Kong

設計者：盛世匯  
 公司名稱：亞洲設計工作室  
 參與團隊：Raymond Lo, Tony Yip  
 攝影者：Rover Leung  
 空間性質：住宅  
 坐落位置：香港沙田  
 面積：1160sq. ft.  
 主要建材：木器、石磚、不銹鋼、纖維、亮漆  
 設計時間：2010年8月-11月  
 完成時間：2011年3月

Designer: Studio ARRT  
 Designer team: Seiki Mori, Rammond Lo, Tony Yip  
 Photographer: Rover Leung  
 Category: Residential Space  
 Location: 2 Lok Kwai Path, Shatin, N.T., Hong Kong  
 Size: 1160sq.ft.  
 Materials: Wood, Stone Tile, Stainless Steel, Fabric, Lacquer Paint  
 Design Period: August - end of November 2010  
 Construction Period: March 2011



盛世匯 Seiki Mori

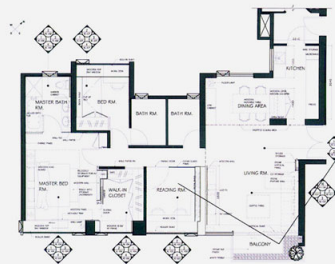
亞洲設計工作室

1968年生於日本大阪，自日本多摩美術大學產品設計學士，英國布魯克大學室內建築設計學士。曾於Dodge Design Institute擔任建築設計師，並與建築設計有限公司(CLI)擔任建築設計師和土木建築師公司擔任產品設計師。所設計產品涵蓋多個領域，包括產品、空間、建築以及室內環境裝置等。

Born in Osaka, Japan in 1968. He studied Product design in Tokyo and Interior Architecture in UK. Through his working experience stretched over Asia, Europe, and USA. He gain world-wide experience and built up his sense of creation.

As the former Senior Architectural Designer in EDGE Design Institute, Architectural Designer in CLI in Hong Kong, Lighting and Product Designer in Toshiba in Japan. He has designed a number of products, space, architecture and lighting installation, his design has been demonstrated in wide range of field and his creation is not bound by the fixed condition to restrict his idea and design concept.

(Studio ARRT)是以香港、上海為據點的建築、室內設計公司，由亞洲多個城市前辦。主要在香港、海外、泰國、日本等地執行室內設計、燈光設計與設計諮詢的工作。Studio ARRT的兩人特別尊重傳統、空間設計在每個階段時進行全副的溝通討論，以創製豐富的空間感並加強與建築師的合作關係，使他們獲得空間設計概念與燈光交響的互相輔助，使他們能夠提供高質素的空間設計和品牌形象。ARRT的燈光設計在上海對策第一、比利時對策的建築師事務所、無錫市古運河燈光設計項目、香港滙斯尼樂園燈光部分曾被採用。



本案位處於綠草如茵的山嶺山，遙眺沙田馬場，在如此迷人的地理條件和戶外景觀襯托之下，業主僅希望室內設計以簡約的現代風格為主，配合周邊自然環境，讓居住悠然生活態度的居住者獲得充分的自在。

設計師即以此作為規劃主軸，每處空間以獨特的設計聯繫著，並由原來的實心牆改為透明玻璃隔間，把其中一面牆改為開放式廚房取代。主臥浴室則以玻璃百葉替代密閉的牆體，但卻在私密密度的狀況中。

「線」的元素是最重要的，它聯繫著每一個室內空間，也帶動了整體空間。沒有「線」的串連，也就無法完成現在的空間形式。文字整理：編輯部

The apartment is located at greenery hill, and look over Shatin racing course. Responded to this splendid view, the owner required simplicity with modern detail composition to harmonize their life style with surrounding environment.

2

Each space is designed to be more connective by modifying the solid wall to transparent glass partition, shifting wall, making open kitchen, lowered glass partition enable to open up master bathroom so on.

As design concept, we applied the unification of compositional line element to each room. In conclusion, entire apartment unifies with rhythm of line. Text by C2.

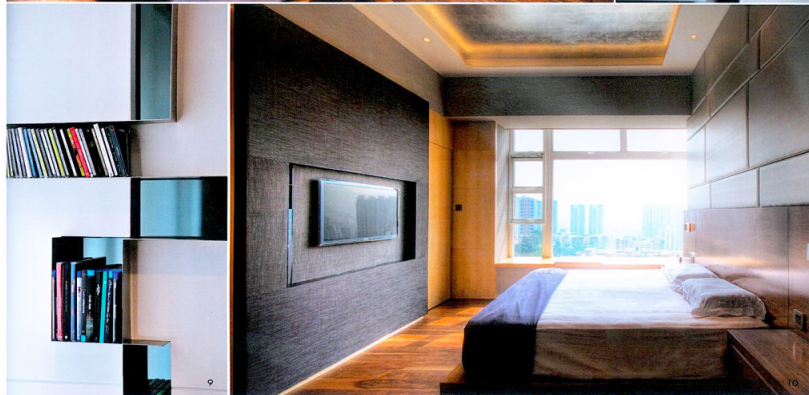
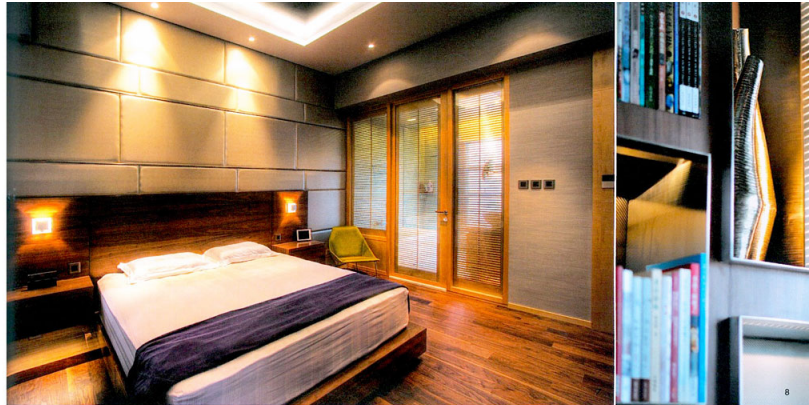
1. 餐桌採用帶有輪子可移動的家具，因應彈性需要隨時可將用餐區域調整。2. 平面配置圖。

1. Movable dining table offers flexible use of the space 2. Plan



3.4. 客廳、餐廳與走道的動線配置。落地窗可以採進充足的自然光。5. 餐廳與客廳的關係。  
3.4. A view towards the living room, dining room and pathway This is a room that receives ample natural light. 5. A view showing the relationship between the dining room and living room





6. 閱讀區 上層的格具增添區域的特色 7.10 主臥房以木作為主，強調它的質感，旁邊的衛浴間以百葉分隔，另一邊是大片玻璃窗，自然光與木頭的溫馨充滿室內 - 8.9. 嵌入牆面的書籍展示區，其分割有大小不同的比例。

6. Reading room and its exquisite furniture pieces 7.10 The master bedroom is furnished mainly with wood materials in an intimate texture. The room is framed on one side by a grand window, the other side by window blinds 8.9. Bookshelves recessed into the thick wall with various sizes and layouts

#### studio ARRT

Studio ARRT is an interior Architectural design studio based in Hong Kong and Shanghai. The Company established in 2007, their network stretches out different Asian cities such as Hong Kong, China, Japan, and Thailand. They mainly provide interior design service and lighting design consultant work. Especially major feature of their studio is to incorporate lighting design with interior design from initial stage of the project. Their technique has been applied to the Belgium EU pavilion in Shanghai Expo2010, and Hong Kong Disneyland 2003.

Both lighting effects and intention of interior design can enhance each other. Therefore they can realize high quality spatial design. They also particularly focus on research on commercial and retail field. They can catch up with latest design globally. They present the appropriate solution to the client through the results of research and analysis. They professionally design to create a unique identity. They believe that this is the way to build a space for the client needs. Their offices locate in Hong Kong and Shanghai. Their commercial and retail design works are acknowledged in Japan, Beijing, Shanghai, Guangzhou, and overall mainland China.